

# GU10 OVERRUN LUMINAIRE



GU10-ÜBERLEUCHTE  
 FARRETTO CARRABILE  
 ZEMNÍ OSVĚTLENÍ GU10  
 ВСТРАИВАЕМЫЙ НАЗЕМНЫЙ СВЕТИЛЬНИК LED

## OG DORYT

MATERIAL ► plastic, stainless steel, tempered glass  
 MATERIAL ► kunststof, rostfreier stahl, gehärtetes glas  
 materiale: plastica, acciaio inossidabile, vetro temperato



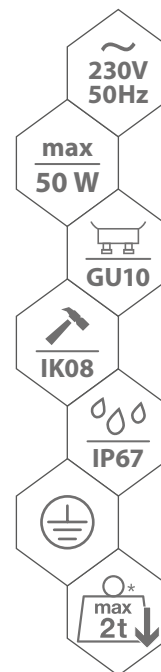
OGR



OGS

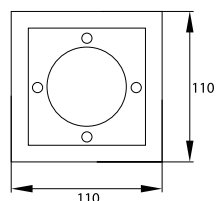


OGN

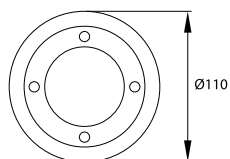


\* Maximum pressure: 2 tonnes

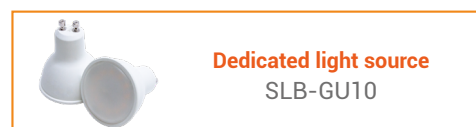
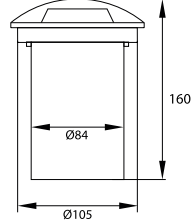
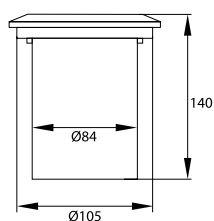
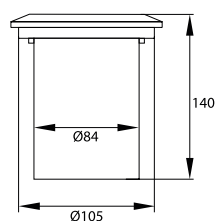
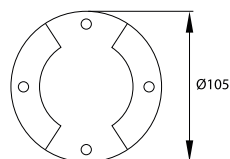
► OGS



► OGR



► OGN



maximum load  
2000 kg



brushed stainless steel



GU10 socket\*



cable glands allowing  
through-feeding



a cover to redirect  
the beam to the area  
around the luminaire



code

C42-OGR50  
 C42-OGS50  
 C42-OGN50



EAN

5908311364215  
 5908311364222  
 5900280945211



package

1/20  
 1/20  
 1/20

P

maximum power of the source [W]\*

1x GU10 50 W  
 1x GU10 50 W  
 1x GU10 50 W

\* No light source included