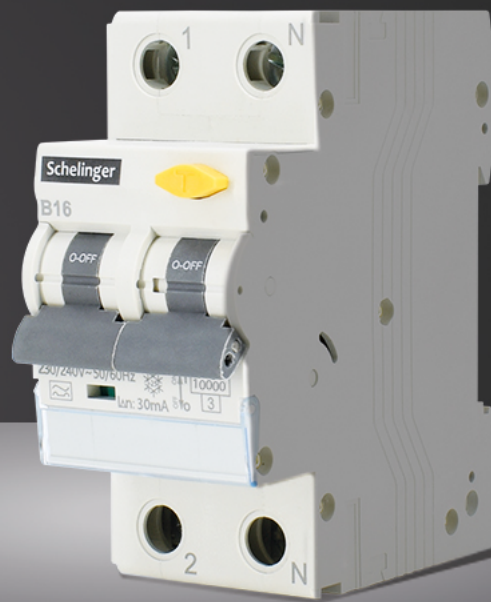
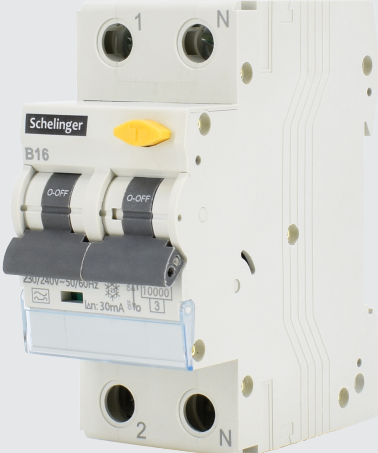


GVL SERIES

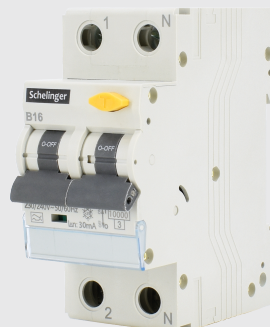
Residual Current Circuit Breakers
with Overcurrent Protection



Products Overview of Residual Current Protective Devices

Product name	RCBO
Product range	GVL
Product picture	
Standard	IEC/EN 61009-1
Number of poles	1P+N
Electrical characteristics	
Rated current(A) I _n	6~32
Rated voltage(V)	AC 230/240
Rated residual current(mA)	30
Rated conditional short-circuit current(kA)	10
Tripping curve	B,C
Residual current operating characteristic	A




GVL Series		RCBO
Standard		EN/IEC61009-1
Rated conditional short-circuit current(kA)		10
Rated current(A),I _n		6,10,13,16, 20, 25, 32
Number of poles		1P+N
Rated sensitivity currents(mA),I _{Δn}		30
Tripping curve		B,C
Rated residual non-operating current		0.5XI _{Δn}
Rated impulse withstand voltage U _{imp} (kV)		4
Rated voltage(V)		AC 230/240
Ambient temperature (°C)		-25~+40,Max.95%humidity
Residual current off time		≤0.1s
Type of trip	Ground fault	Electronic
	Over current	Thermal-magnetic
Electrical endurance		4000
Mechanical endurance		10000
Terminal capacity		10mm ² flexible/16mm ² rigid
Protection degree		IP20
Installation		35mm DIN rail
Certification		CE



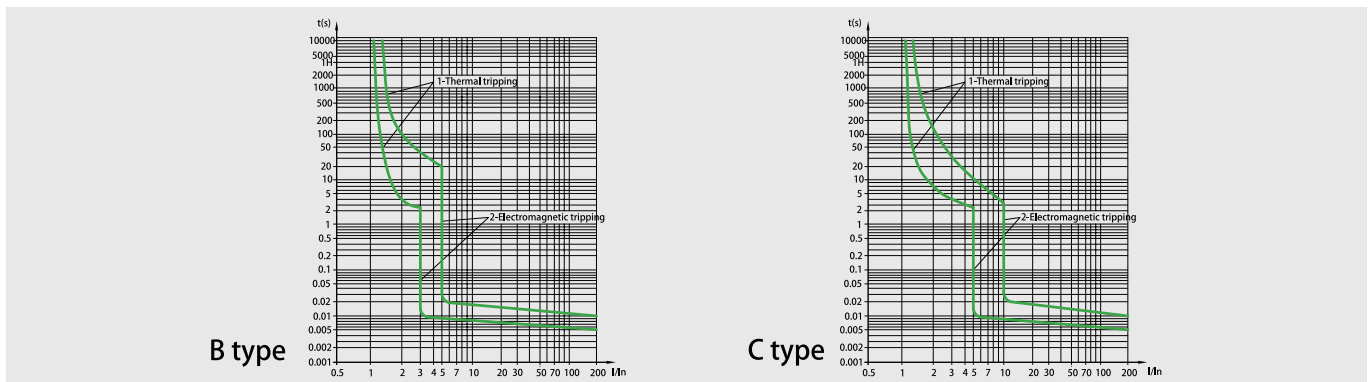
GVL 10kA (RCBO)

GVL Series

RCBO

	Rated current(A)	$I_{\Delta n}$	Type A 		Packing unit
			B curve	C curve	
 Type A 	6	30mA	GVL-A-B06-10KA	GVL-A-C06-10KA	6
	10		GVL-A-B10-10KA	GVL-A-C10-10KA	
	13		GVL-A-B13-10KA	GVL-A-C13-10KA	
	16		GVL-A-B16-10KA	GVL-A-C16-10KA	
	20		GVL-A-B20-10KA	GVL-A-C20-10KA	
	25		GVL-A-B25-10KA	GVL-A-C25-10KA	
	32		GVL-A-B32-10KA	GVL-A-C32-10KA	

Curves



Breaking time of residual current

		Max. breaking time			
I_n (A)	$I_{\Delta n}$ (A)	$I_{\Delta n}$	$2 I_{\Delta n}$	$5 I_{\Delta n}$	5-500A
6-32	0.03	0.1s	0.08s	0.04s	0.04s

Power dissipation per pole

Rated current I_n (A)	Max power dissipation per pole (W)
6	6
10	6
16	7
20	9
25	9
32	12


GVL Series

RCBO

Wiring (The suitable conductors should be used for connection, see table below for relative parameters)

Rated current In (A)	Cross section area s(mm ²)	Tightening torque(N.m)
6	1	2.0
10	1.5	
13	1.5	
16-20	2.5	
25	4	
32	6	

Types

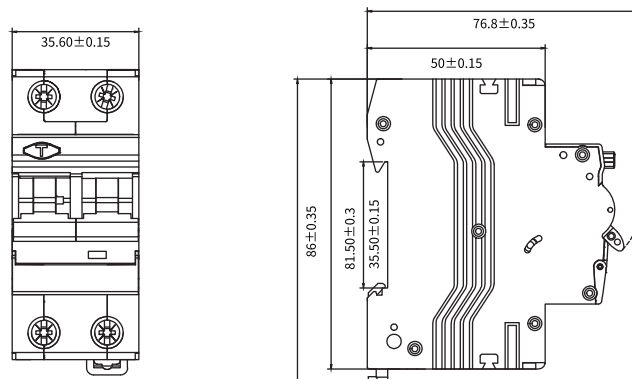
Type A : For which tripping is ensured for residual sinusoidal alternating currents and residual pulsating direct currents, whether suddenly applied or slowly rising.

Tripping sensitivity data

RCD with a rated residual current of maximum 30mA are used for personnel, material and fire protection, as well as for protection against direct contact.

RCD with a rated residual current of maximum 300mA are used as preventative fire protection in case of insulation faults. RCD with a rated residual current of 100mA co-ordinated with the earth system according to the formula $I_{\Delta n} < 50/R$, to provide protection against indirect contacts.

Overall and mounting dimensions



GVL 10kA (RCBO)