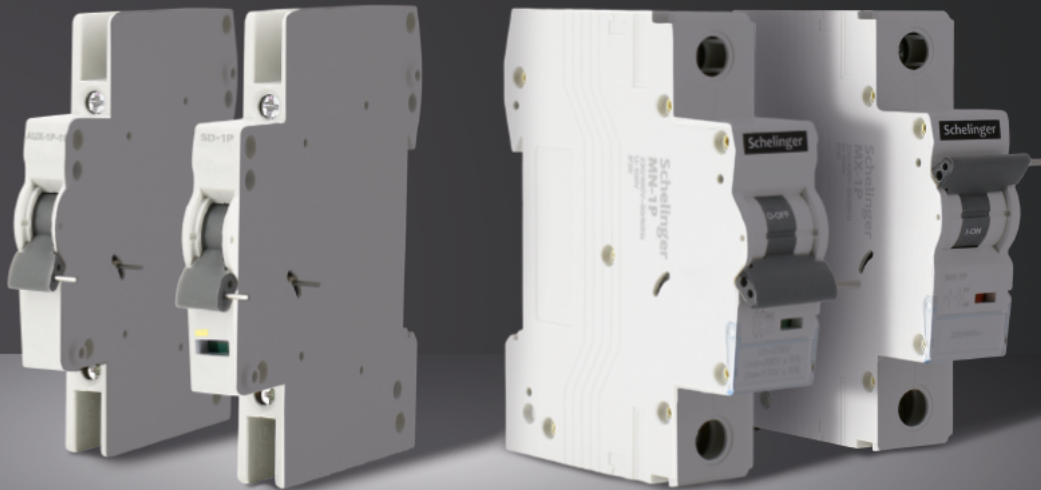


## AUX, SD, MN, MX

MCB Accessories



## MCB Accessories

## Circuit Breaker Accessories

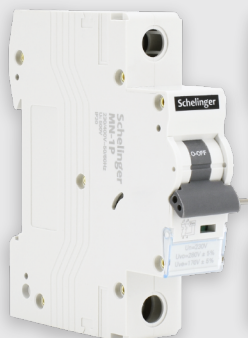
Rated voltage(V)	MN, MX : AC 230/400 AUX, SD : AC 230
Rated frequency(Hz)	MN, MX : 50/60Hz AUX, SD : 50Hz
Ambient temperature(°C)	-25/+40,Max.95%humidity
Storage temprature (°C)	-20~+60
Electric endurance	4000
Mechanical endurance	10000
Protection degree	IP20



AUX-1P



SD-1P



MN-1P



MX-1P

## MCB Accessories

## Circuit Breaker Accessories

### Application

Applicable to MCB, used to control remote signaling device.



### Combination scheme

AUX	G8	AUX	MX	G8
-----	----	-----	----	----

### OF Auxiliary Contact

Type code	Rated voltage (V)	Rated current (A)
AC-12	230	4
AC-14	230	2
DC-12	110	0.5
DC-14	48	1

•Dielectric strength: 1500V/1 min

•Electro-mechanical endurance:  $\geq 5000$

•Mounted on the left side of the MCB G8, indicating "ON", "OFF" status of combined MCB.

### MX Shunt Tripper

Type code	Rated voltage (V)
AC	AC 230V
AC	AC 400V
DC	DC 24V
DC	DC 48V

•Rated insulation voltage( $U_i$ ): 500V

•Operate voltage range: 70-110%  $U_s$

•Dielectric strength: 2kV/1 min

•Electro-mechanical endurance:  $\geq 4000$

•Mounting on the left side of MCB/RCBO, used to trip the combined MCB/RCBO by remote controlling device.

 BEMKO Sp. z o.o. | ul. Bocznicowa 13, Jawczyce

 [export@bemko.pl](mailto:export@bemko.pl)

 +48 22 732 11 85

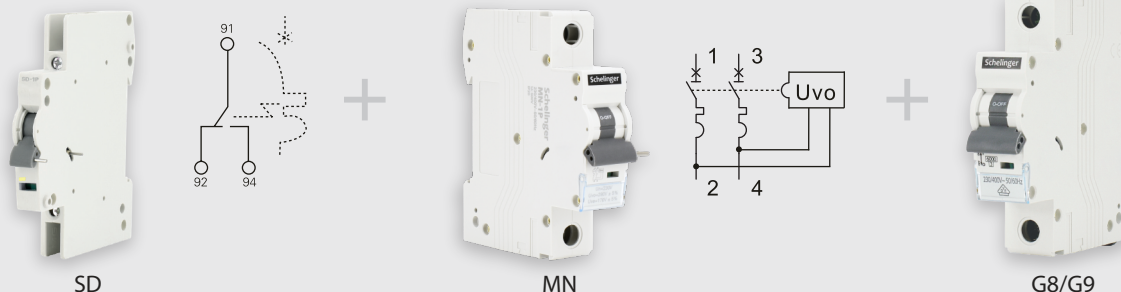
[www.schelinger.eu](http://www.schelinger.eu)

## MCB Accessories

## Circuit Breaker Accessories

### Application

Applicable to MCB, used to control remote signaling device.



### Combination scheme

SD	G8	SD	MN	G8
----	----	----	----	----

### SD Alarm Switch

Type code	Rated voltage (V)	Rated current (A)
AC-12	230	4
AC-14	230	2
DC-12	110	0.5
DC-14	48	1

- Dielectric strength: 1500V/1 min
- Electro-mechanical endurance:  $\geq 5000$
- Is used to connect ON/OFF auxiliary contact, work as circuit breaker ON/OFF indicator in case of faulty (tripping).

### MN Over-voltage/Under-voltage Tripper

Type code	Rated voltage (V)
MN230V	AC 230

- Rated insulation voltage( $U_i$ ): 500V
- Over-voltage tripping range:  $280V \pm 5\%$
- Under-voltage tripping range:  $170V \pm 5\%$
- Electro-mechanical endurance:  $\geq 4000$
- Mounted on the left side of circuit breaker, actuate the combined device to trip in case of under-voltage or over-voltage, effectively prevent the device from closing operation under abnormal power voltage condition.