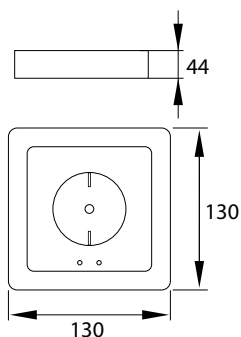
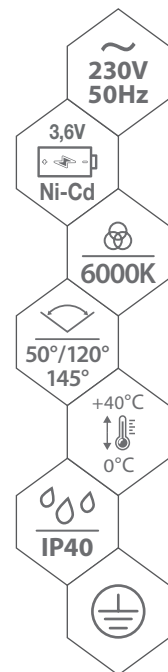
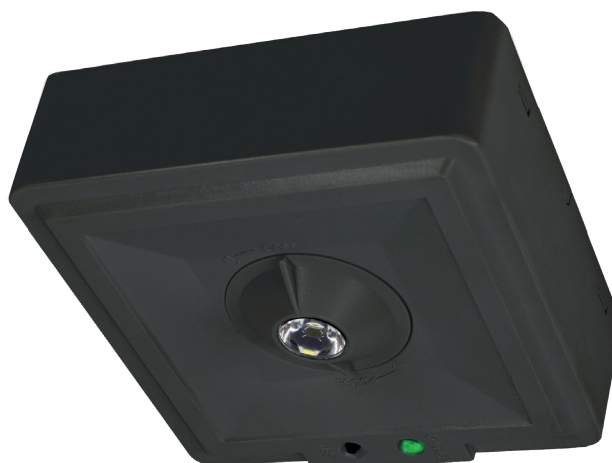


EMERGENCY LUMINAIRE
NOTLEUCHTE

SKL SKALER - S

MATERIAL ▶ PC
MATERIAL ▶ PC
MATERIAL ▶ PC



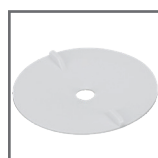
SYSTEM AUTOTESTU



145°/55° SC - soczewka korytarzowa



50° SO - soczewka skupiająca



120° SX - bez soczewki



obudowa wykonana z poliwęglanu



świadczenie dopuszczenia nr 3856/2019



kod
C91-SKL-S-35C-AT3H-CNBOP
C91-SKL-S-35O-AT3H-CNBOP
C91-SKL-S-35X-AT3H-CNBOP

EAN
5900280939548
5900280939555
5900280939562

opakowanie
1
1
1

typ soczewki
SC
SO
SX

moc [W]
3
3
3

pojemność akumulatora [mAh]
2500
2500
2500